

BH1OZ2000



www.bahco.com.au



Consult the vehicles
manufacturer's manual prior
to lifting the vehicle.
Conduct a pre-operational
check of the equipment.

AS 2615:2016



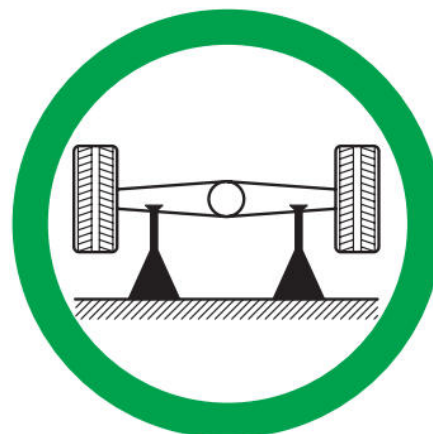
ORIGINAL INSTRUCTIONS



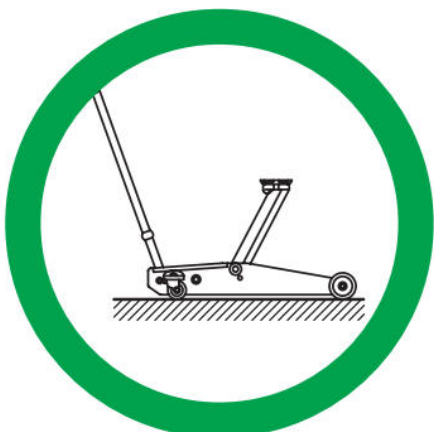
WARNING



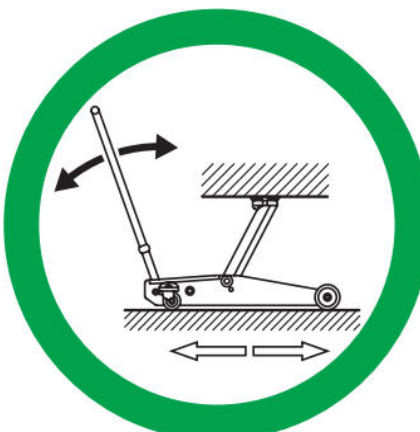
**DEATH OR INJURY
FROM INCORRECT USE**



**USE TWO
SUPPORT STANDS**



**FLAT HARD
LEVEL GROUND**



**FREE TO ROLL DURING
LIFTING AND LOWERING**

REFER TO VEHICLE MANUFACTURER'S MANUAL FOR INSTRUCTIONS



- Read, study, understand, & follow all instructions before using.
- Failure to heed these warnings may result in serious or fatal personal injury and/or property damage.
- Inspect the jack before each use. Do not use jack if damaged, altered, modified, in poor condition, leaking hydraulic fluid, or unstable due to loose or missing components. Make corrections before using.
- Do not use jack beyond its rated capacity. Do not shock load.
- **This is a lifting and lowering device only. Immediately after lifting, support the vehicle with two support stands capable of sustaining the load before working on the vehicle.**
- Use only on a hard level surface free from obstructions so the jack is free to reposition itself during lifting and lowering operations.
- Lift only on areas of the vehicle as specified by the vehicle manufacturer.
- Chock the unlifted wheels of the vehicle.
- No person should remain in a vehicle that is being lifted.
- Center load on saddle. Be sure setup is stable before working on vehicle.

SAVE THESE INSTRUCTIONS



- Do not move or dolly the vehicle while on the jack.
- Do not use any materials that may serve as risers, spacers or extenders between the stock lifting saddle and the load.
- Do not use any adaptors that replace the stock lifting saddle unless approved or supplied by the manufacturer.
- Do not use (or modify) this product for any other purpose than that for which it was designed.
- Consult the vehicle manufacturer's manual prior to the lifting of the vehicle.
- Conduct a pre-operational check of the equipment.
- Use the hydraulic trolley jack for lifting and lowering only; the raised vehicle should be supported on suitably rated vehicle support stands.
- Use the hydraulic trolley jack on a hard level surface and ensure it is free to roll during lifting and lowering.
- No person should remain in a vehicle that is being lifted.
- Chock the unlifted wheels of the vehicle.
- Centrally locate the load on the head cap.
- Support the vehicle on suitably rated vehicle support stands and remove the hydraulic trolley jack prior to commencement of work on the vehicle.
- No person should get bodily under a vehicle that is supported only by a hydraulic trolley jack.
- Modifications must not be carried out or accessories added.

PREVENTATIVE MAINTENANCE

Obey all instructions to avoid possible injury or death.

1. Always store the jack in a well protected area where it will not be exposed to inclement weather, corrosive vapors, abrasive dust, or any other harmful elements. The jack must be cleaned of water, snow, sand, grit, oil, grease or other foreign matter before using.
2. The jack must be lubricated periodically in order to prevent premature wearing of parts. A general purpose grease must be applied to all zerK grease fittings, caster wheels, front axle, elevator arm, handle base pivot bolts, release mechanism and all other bearing surfaces. Worn parts resulting from inadequate or no lubrication are not eligible for warranty consideration.
3. It should not be necessary to refill or top off the reservoir with hydraulic fluid unless there is an external leak. An external leak requires immediate repair which must be performed in a dirt-free environment by an authorized service center.

IMPORTANT: In order to prevent seal damage and jack failure, never use alcohol, hydraulic brake fluid or transmission oil in the jack.

Use Hydraulic Oil ISO VG15

4. Every jack owner is responsible for keeping the jack labels clean and readable. Use a mild soap solution to wash external surfaces of the jack but not any moving hydraulic components.
5. Inspect the jack before each use. Do not use the jack if any component is cracked, broken, bent, shows sign of damage or leaks hydraulic fluid. Do not use the jack if it has loose or missing hardware or components, or is modified in any way. Take corrective action before using the jack again.
6. Any hydraulic repairs within the warranty period must be performed by an authorized service center.

IMPORTANT: Service jacks are designed for lifting purposes only; always support raised load with jack stands.

REGULAR MAINTENANCE

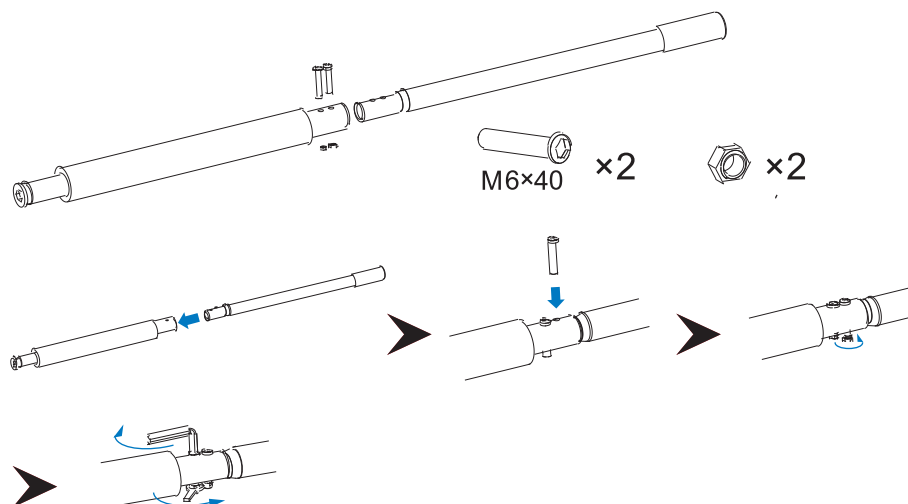
MONTHLY or as necessary (depending on usage)

1. Using a grease gun, add grease to grease fitting in the lift arm pivot shaft.
(Use a multi-purpose NLGI type grease only.)
2. Lubricate all linkages and pivot points. (Use white lithium spray grease only.)
3. Remove handle; lubricate handle receptacle and handle end. (Use white lithium spray grease only.)
4. Lubricate both rear casters, bearing and both front wheels. (Use white lithium spray grease only.)
5. Tighten all accessible hardware.



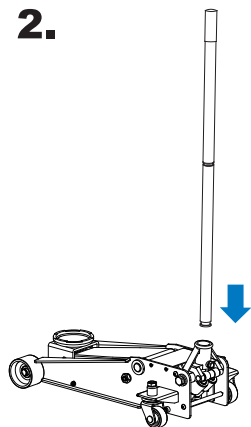
Handle Assembly

1.



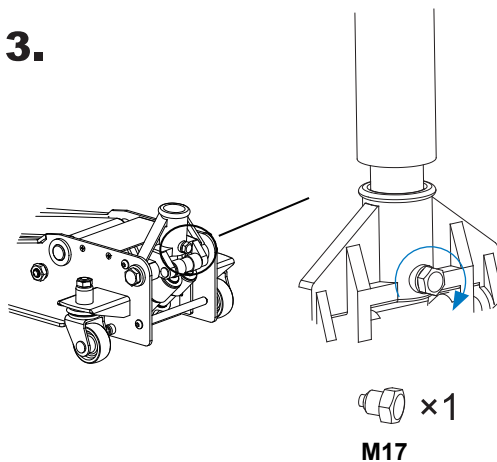
1. Connect the two short handles together and tighten by screws and nuts.

2.



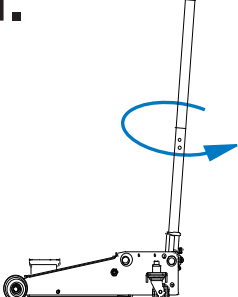
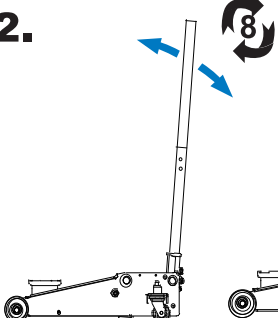
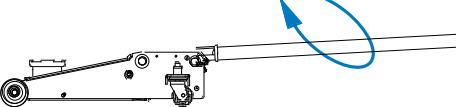
2. Plug the handle into the jack.

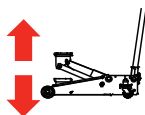
3.



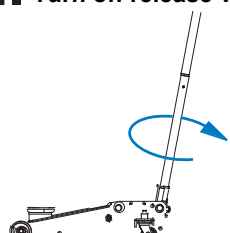
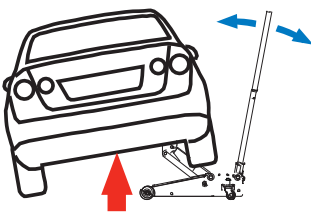
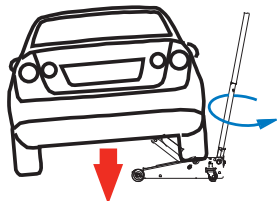
3. Tighten the locking screw.

Air Purging

1. 
1. With the release valve handle in the closed position, turn the handle in a counterclockwise direction 2 to 3 complete revolutions.
2. 
2. Pumping the handle up and down at least 8 times.
3. 
3. With the handle in a horizontal position closest the floor. Turn the handle in a clockwise direction until it stops. If the operation is still abnormal, repeat above step 1~3 again



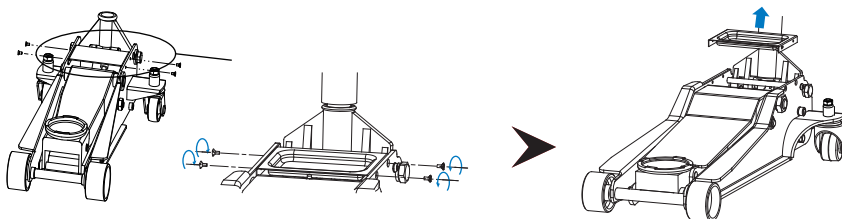
Lifting and Lowering

1. **Turn off release valve**

1. Clockwise turn the handle to completely close the release valve.
2. **Lift vehicle**

2. Pumping the handle up and down to lift the vehicle.
3. **Lower vehicle**

3. Counter-clockwise and slowly rotate the handle to lower the vehicle.



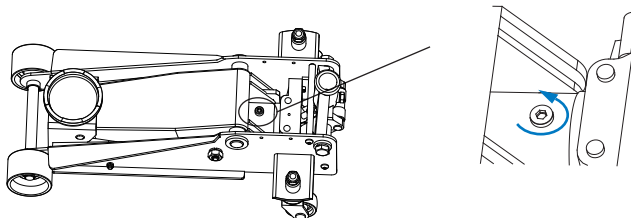
Refilling oil

1.



Remove the tool tray.

2.



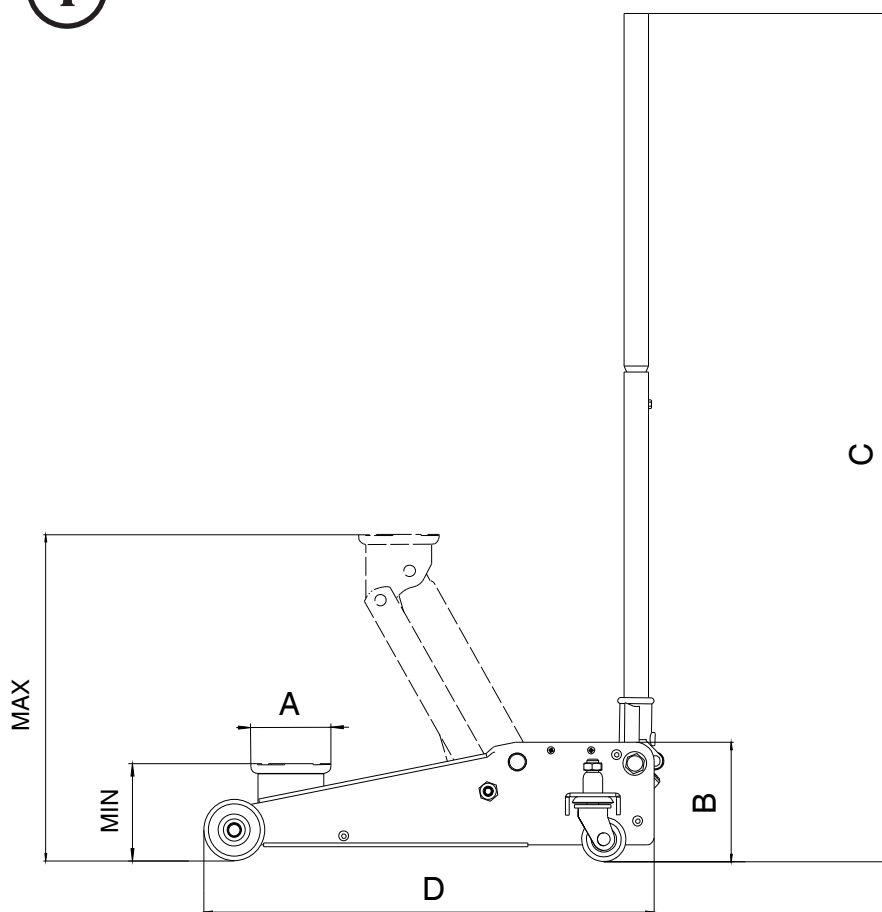
Remove the oil sealing screw from the pump.


3.



Refill till oil level is visible.

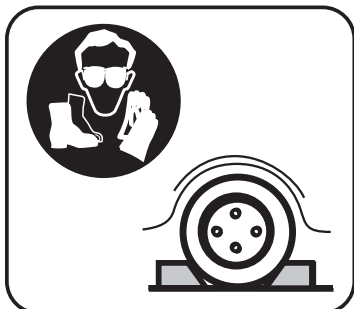
P/N	OIL VOLUME(ml)
BH1OZ2000	205



Ref	 KG MAX	MAX (mm)	MIN (mm)	A	B	C	D
BH1OZ2000	2000	462	130	120	162	1410	617



WARNING



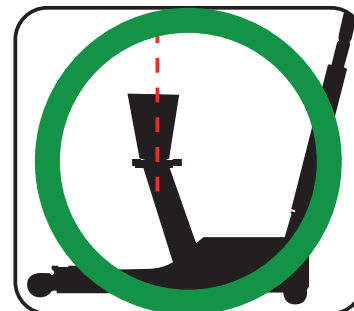
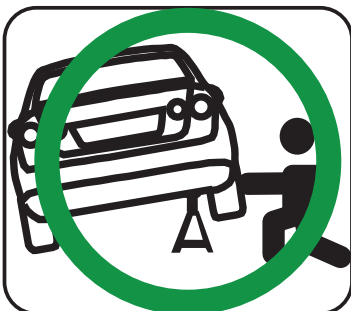
Personal protection equipment is required before operation.
The unlifted wheels of the vehicle should be chocked.



Loading can not exceed maximum capacity.



No person should remain in a vehicle that is being lifted. No person should get bodily under a vehicle that is supported by a hydraulic trolley jack.



The trolley jack should be used on a hard level surface and be free to roll during lifting and lowering.

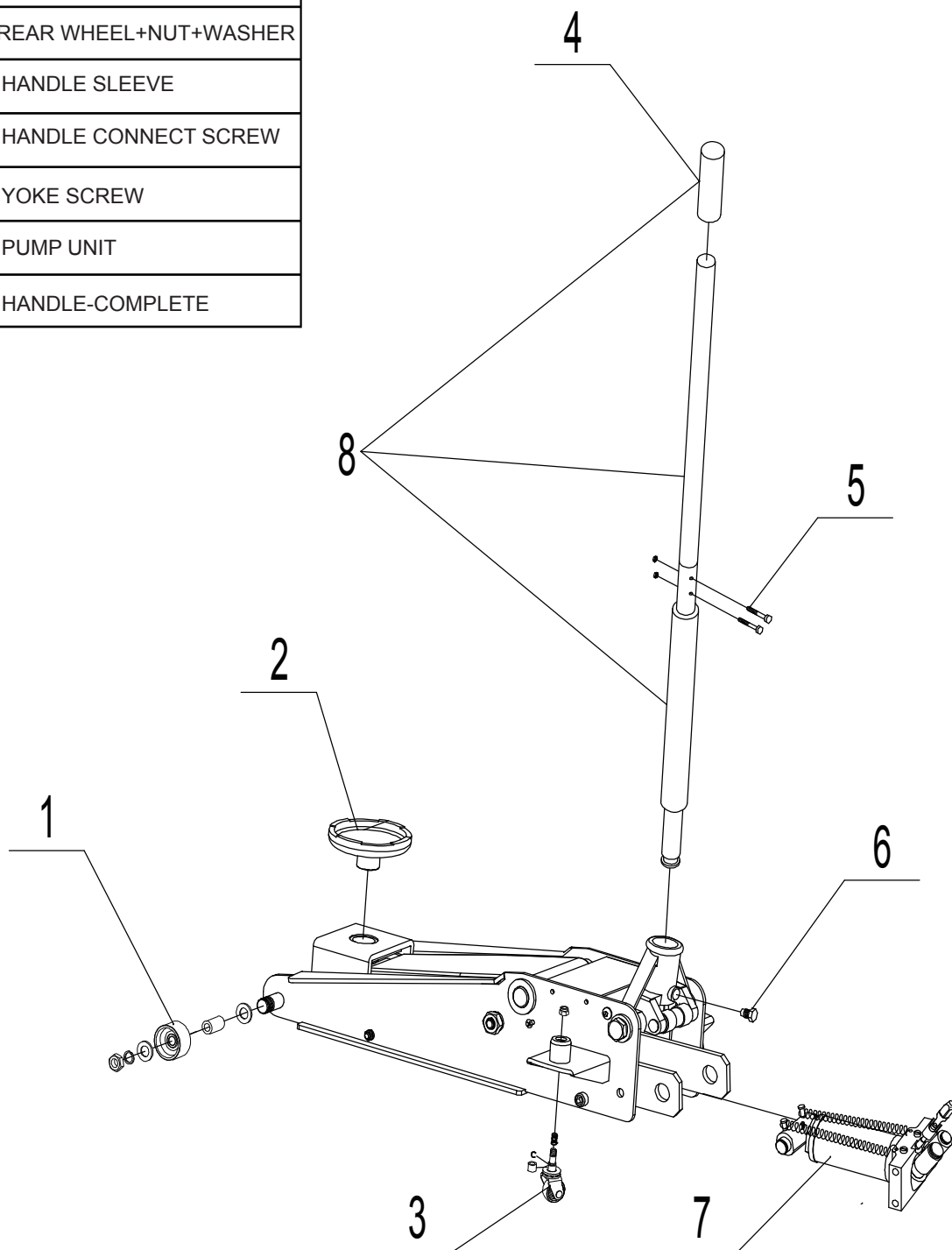


This hydraulic trolley jack should be used for lifting and lowering only;
The raised vehicle should be supported on two vehicle support stands.



The load should be centrally located on the head cap.

Item#	Part Code	Description
1	BH1OZ2000-01	FRONT WHEEL +NUT+WASHER
2	BH1EU3000-02	METALLIC SADDLE
3	BH1OZ2000-03	REAR WHEEL+NUT+WASHER
4	BH1EU3000-04	HANDLE SLEEVE
5	BH1EU3000-05	HANDLE CONNECT SCREW
6	BH1EU3000-06	YOKE SCREW
7	BH1EU3000-07	PUMP UNIT
8	BH1EU3000-08	HANDLE-COMPLETE



SNA Europe

SNA Europe

DECLARATION OF CONFORMITY

Reference: **BH1OZ2000** Type: **Jack** Year: **2019**

Was manufactured in conformity with the provisions in the: **AS 2615:2016**

Quality manager / Signature:



SNA E Australia PO Box 98, Hoxton Park, NSW 2171 Australia

