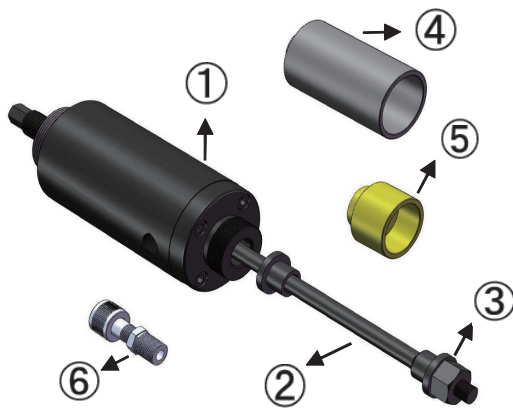




**USER MANUAL
ORIGINAL INSTRUCTIONS**

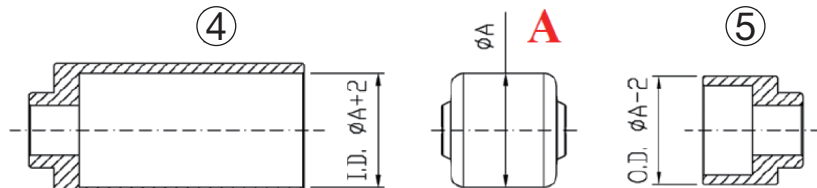
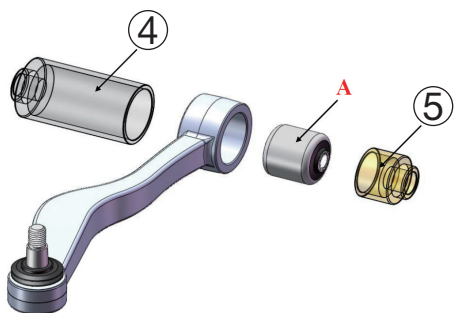


Desc.	Reference	Specification
(1)	BT20P49-01	18,2t Hydraulic System
(2) Spindle	BT20P49-03	M10 x 1.5
	BT20P49-04	M12 x 1.75
	BT20P49-05	M14 x 2.0
	BT20P49-06	M16 x 2.0
	(3)	N/A
(6)	BT20P49-02	M24.5xP1.25 Adaptor



Desc.	Reference	Outer Ø	Inner Ø
(4) Long Shafted bushing 110 mm	BT20P49-07	26	18
	BT20P49-08	28	20
	BT20P49-09	30	22
	BT20P49-10	32	24
	BT20P49-11	34	26
	BT20P49-12	36	28
	BT20P49-13	38	30
	BT20P49-14	40	32
	BT20P49-15	42	34
	BT20P49-16	44	36
	BT20P49-17	46	38
	BT20P49-18	48	40
	BT20P49-19	50	42
	BT20P49-20	52	44
	BT20P49-21	54	46
	BT20P49-22	56	48
	BT20P49-23	58	50
	BT20P49-24	60	52
	BT20P49-25	62	54
	BT20P49-26	64	56
BT20P49-27	66	58	
BT20P49-28	68	60	

Desc.	Reference	Outer Ø	Inner Ø
(5) Short Shafted bushing 40 mm	BT20P49-29	26	18
	BT20P49-30	28	20
	BT20P49-31	30	22
	BT20P49-32	32	24
	BT20P49-33	34	26
	BT20P49-34	36	28
	BT20P49-35	38	30
	BT20P49-36	40	32
	BT20P49-37	42	34
	BT20P49-38	44	36
	BT20P49-39	46	38
	BT20P49-40	48	40
	BT20P49-41	50	42
	BT20P49-42	52	44
	BT20P49-43	54	46
	BT20P49-44	56	48
	BT20P49-45	58	50
	BT20P49-46	60	52
	BT20P49-47	62	54
	BT20P49-48	64	56
	BT20P49-49	66	58
	BT20P49-50	68	60



UNIT : mm



Ø A	(4) Internal Ø	(5) External Ø
60 mm	62 mm	58 mm



**USER MANUAL
ORIGINAL INSTRUCTIONS**

